

## BRIDGE MOUNTING INSTRUCTIONS



**Read and understand the entire instruction manual before using this product.**



Always use three (3) fasteners to attach your holster to the Bridge™ and three (3) fasteners to attach the Bridge™ to your adaptor/belt mount. Not using all the required fasteners could result in damage to the holster or attachment.

Refer to the “Hole Number Key”, “Required Hardware Matrix”, and diagram (Fig 1.1) for the proper hardware and placement of the included hardware.

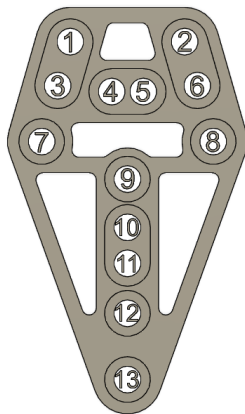
### I. **INSTALLING THE THREADED POSTS INTO THE BRIDGE™**

The purpose of this step is to affix and retain the threaded posts into the proper holes in the Bridge™. You will use your desired attachment system to aid in installing the threaded posts. If the threaded posts are accidentally installed into the incorrect holes or a different holster or attachment is desired later on, the posts can be removed and reinserted into a different hole. Refer to the “Post Removal Instructions” for that process.

**Do not install the Bridge™ onto your holster until this step is completed.**

- A. **Place the desired attachment onto the Bridge™ and align the holes referenced in the diagram (Fig 1.1) and the hole number key.** Note: The Bridge™ is symmetrical on both sides, it does not matter which side is mounted to the holster and which side is mounted to the attachment.

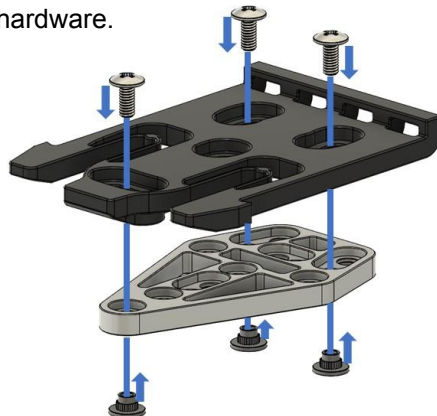
FIG 1.1



HOLE NUMBER KEY	
DARA	1 - 2 - 9
SAFARILAND	3 - 6 - 13
ALIEN GEAR	3 - 6 - 12
G-CODE	7 - 8 - 12
G-CODE - RH	4 - 6 - 11
G-CODE - LH	3 - 5 - 11
BLADE TECH TEK MOUNT	7 - 8 - 12
BLADE TECH HOLSTER	7 - 8 - 10
COMP-TAC	9 - 11 - 13

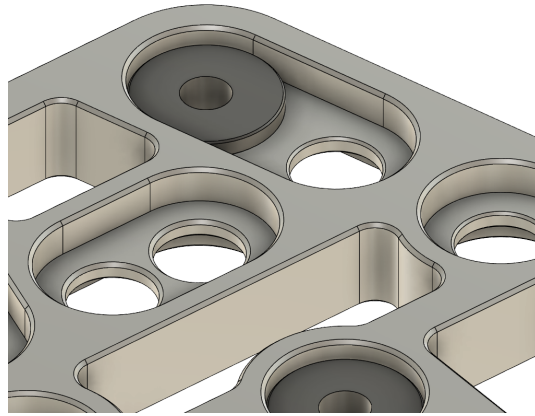
- B. **Align the holes of the attachment to the Bridge™, place a threaded post from the backside of the Bridge™ into the proper holes (Fig 1.1), and insert the proper screws through the attachment to secure the threaded posts in place.** (FIG 1.2) Note: It is recommended that you use your original attachments hardware for securing your attachment to the bridge, if your attachment did not come with hardware, refer to the “Required Hardware Matrix” for proper hardware.

FIG 1.2



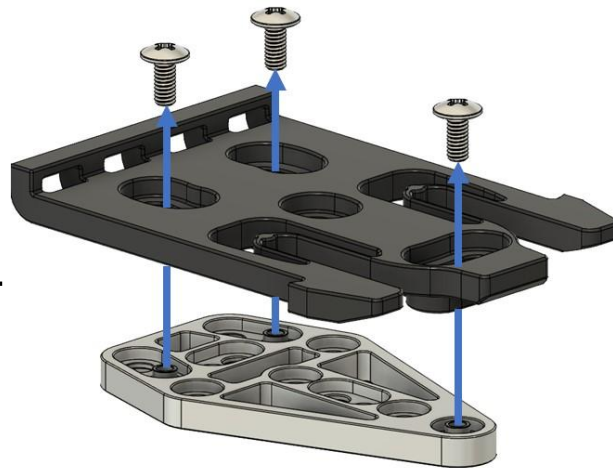
- C. Loosely install all threaded posts and mounting screws before tightening to ensure proper alignment. Once all mounting screws are in place, with a #2 Phillips screwdriver, tighten screws till the threaded post is fully seated into the hole. The post will be fully seated when the large flat side of the post is recessed below the surface of the Bridge™ approximately 1/32". (FIG 1.3) Note: Do not use power tools, damage could result.

FIG 1.3



- D. Remove mounting screws and attachment and set aside, this hardware will be used again to reattach the attachment to the Bridge™. (FIG 1.4) Note: You must remove the attachment and mounting screws to install the Bridge™ onto your holster otherwise the holster mounting holes may be blocked by the attachment.

FIG 1.4

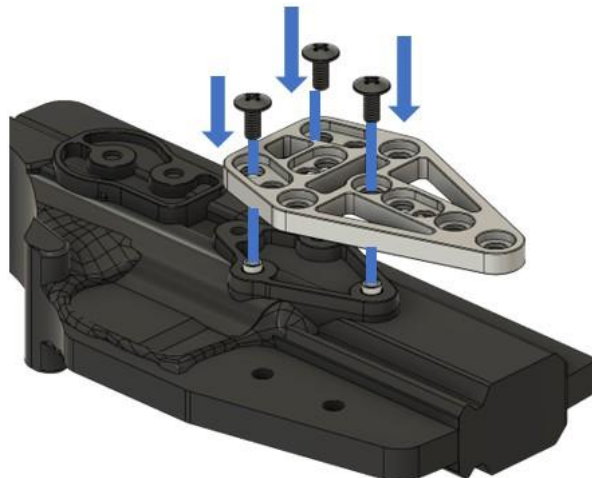


## II. INSTALLING THE BRIDGE™ ONTO THE HOLSTER

In this step, you will be installing the Bridge™ onto your holster and reinstalling your attachment onto the Bridge™.

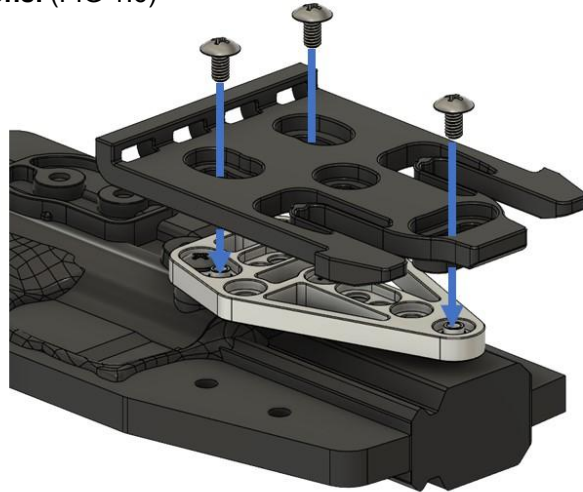
- A. Install the Bridge onto the holster with the large flat side of the threaded post facing the holster and using the appropriate hardware (Ref. "Required Hardware Matrix"), torque to 25 in-lbs or the manufacturer's recommended specifications. (FIG 1.5) Note: It is highly recommended to apply the supplied thread locking compound to the threads of the screws before installation to prevent unwanted loosening of mounting hardware.

FIG 1.5



- B. Reinstall the attachment and torque the mounting screws to 25 in-lbs or the manufacturer's recommended specifications. (FIG 1.6)

FIG 1.6



**TO AVOID DAMAGE TO YOUR FIREARM  
ENSURE NO SCREWS ARE EXCESSIVELY  
PROTRUDING INSIDE THE HOLSTER BEFORE  
INSERTING YOUR FIREARM.**



**Users must conduct daily inspections of the holster and attachments to identify signs of excessive wear, loss of handgun retention, and ensure the tightness of all hardware.**

## **REQUIRED TOOLS**

#2 Phillips screwdriver

## **INCLUDED HARDWARE**

- 1 - Bridge mount
- 1 - Vibra-Tite Thread locking compound

### **WHITE BAG**

- 4 - Threaded posts
- 3 - Spacers

- 1 - Washer

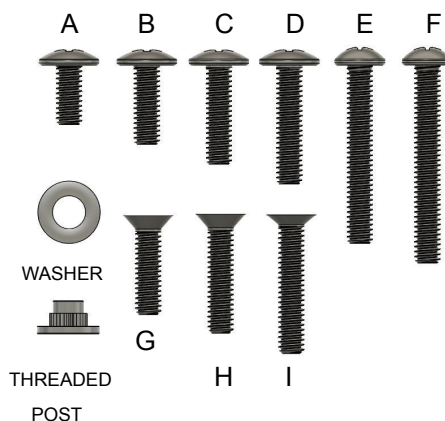
### **RED BAG**

- 7 - ( $\frac{3}{8}$ " ) Phillips screws - (A)
- 3 - ( $\frac{1}{2}$ " ) Phillips screws - (B)
- 3 - ( $\frac{5}{8}$ " ) Phillips screws - (C)
- 3 - ( $\frac{3}{4}$ " ) Phillips screws - (D)
- 1 - (1  $\frac{1}{8}$ " ) Phillips screw - (E)
- 1 - (1  $\frac{1}{4}$ " ) Phillips screw - (F)

### **BLUE BAG**

- 3 - ( $\frac{5}{8}$ " ) Phillips Flat top screws - (G)
- 2 - ( $\frac{3}{4}$ " ) Phillips Flat top screws - (H)
- 1 - ( $\frac{7}{8}$ " ) Phillips Flat top screw - (I)

### **ACTUAL SIZE WHEN PRINTED**



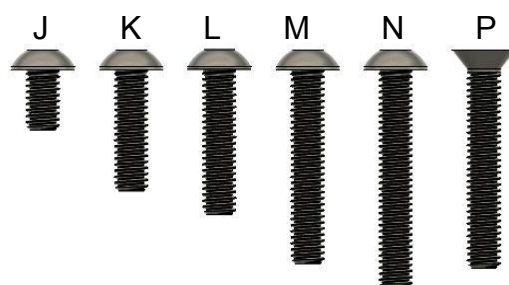
## **OPTIONAL HARDWARE KIT**

FOR ALIEN GEAR // BLACKHAWK HOLSTERS:

### **BLACK BAG**

- 3 - ( $\frac{5}{16}$ " ) Allen screws - (J)
- 1 - ( $\frac{5}{8}$ " ) Allen screw - (K)
- 3 - ( $\frac{3}{4}$ " ) Allen screws - (L)
- 2 - (1" ) Allen screws - (M)
- 2 - (1  $\frac{1}{8}$ " ) Allen screws - (N)
- 1 - (1  $\frac{1}{8}$ " ) Phillips Flat top screw - (P)
- 1 -  $\frac{1}{8}$  Allen wrench

### **ACTUAL SIZE WHEN PRINTED**



## REQUIRED HARDWARE MATRIX

HOLSTER	ATTACHMENT	HARDWARE - NUMBERS (##) REFER TO HOLE PLACEMENT REFERENCED IN FIG 1.1
DARA	SAFARILAND QLS	3 - POSTS (3,6,13), 3 - A SCREWS (1,2,9), 3 - B SCREWS (3,6,13)
DARA	SAFARILAND UBL	3 - POSTS (3,6,13), 3 - A SCREWS (1,2,9), 3 - A SCREWS (3,6,13)
DARA	G-CODE (GCA35)	3 - POSTS (7,8,12), 3 - A SCREWS (1,2,9), 3 - G SCREWS (7,8,12)
DARA	G-CODE RH (GCA33)	3 - POSTS (4,6,11), 3 - A SCREWS (1,2,9), 3 - G SCREWS (4,6,11)
DARA	G-CODE LH (GCA34)	3 - POSTS (3,5,11), 3 - A SCREWS (1,2,9), 3 - G SCREWS (3,5,11)
DARA	ALIEN GEAR	3 - POSTS (3,6,12), 3 - A SCREWS (1,2,9), 3 SPACERS (3,6,12), 3 - C SCREWS (3,6,12)
DARA	BLADE TECH	3 - POSTS (7,8,12), 6 - A SCREWS (1,2,7,8,9,12)
DARA	COMP-TAC	3 - POSTS (11,13), 3 - A SCREWS (1,2,11), 1 - B SCREW (13), 1 - C SCREWS (9)
SAFARILAND 7000 SERIES	DARA	3 - POSTS (1,2,9), 3 - A SCREWS (3,6,13), 3 - G SCREWS (1,2,9)
SAFARILAND 6000 SERIES	DARA	3 - POSTS (1,2,9), 3 - A SCREWS (3,6,13), 3 - G SCREWS (1,2,9)
SAFARILAND 7000 SERIES	G-CODE (GCA35)	3 - POSTS (7,8,12), 3 - A SCREWS (3,6,13), 3 - G SCREWS (7,8,12)
SAFARILAND 6000 SERIES	G-CODE (GCA35)	3 - POSTS (7,8,12), 3 - A SCREWS (3,6,13), 3 - G SCREWS (7,8,12)
SAFARILAND 7000 SERIES	G-CODE RH (GCA33)	2 - POSTS (4,11), 2 - A SCREWS (3,13), 2 - G SCREWS (4,11), 1 - H SCREW (6)
SAFARILAND 6000 SERIES	G-CODE RH (GCA33)	2 - POSTS (4,11), 2 - A SCREWS (3,13), 2 - G SCREWS (4,11), 1 - I SCREW (6)
SAFARILAND 7000 SERIES	G-CODE LH (GCA34)	2 - POSTS (5,11), 2 - A SCREWS (6,13), 2 - G SCREWS (5,11), 1 - H SCREW (3)
SAFARILAND 6000 SERIES	G-CODE LH (GCA34)	2 - POSTS (5,11), 2 - A SCREWS (6,13), 2 - G SCREWS (5,11), 1 - I SCREWS (3)
SAFARILAND 7000 SERIES	ALIEN GEAR	1 - POST (12), 1 - A SCREW (13), 3 - SPACERS (3,6,12), 1 - C SCREW (12), 2 - D SCREWS (3,6)
SAFARILAND 6000 SERIES	ALIEN GEAR	1 - POST (12), 1 - A SCREW (13), 3 - SPACERS (3,6,12), 1 - C SCREW (12), 2 - D SCREWS (3,6)
SAFARILAND 7000 SERIES	BLADE TECH	3 - POSTS (7,8,12), 6 - A SCREWS (3,6,7,8,12,13)
SAFARILAND 6000 SERIES	BLADE TECH	3 - POSTS (7,8,12), 6 - A SCREWS (3,6,7,8,12,13)
SAFARILAND 7000 SERIES	COMP-TAC	2 - POSTS (9,11), 4 - A SCREWS (3,6,9,11), 1 - C SCREW (13)
SAFARILAND 6000 SERIES	COMP-TAC	2 - POSTS (9,11), 4 - A SCREWS (3,6,9,11), 1 - C SCREW (13)
SAFARILAND 7000 SERIES	RAM MOUNT	2 - POSTS (4 OR 5, 12), 3 - A SCREWS (3,6,13), 2 - B SCREWS (4 OR 5, 12)
SAFARILAND 6000 SERIES	RAM MOUNT	2 - POSTS (4 OR 5, 12), 3 - A SCREWS (3,6,13), 2 - B SCREWS (4 OR 5, 12)
G-CODE RH	SAFARILAND QLS	2 - POSTS (3,13), 1 - C SCREWS (11), 1 - D SCREWS (4), 1 - F SCREWS (6), 1 WASHER (6), 2 - B SCREWS (3,13)
G-CODE LH	SAFARILAND QLS	2 - POSTS (6,13), 1 - C SCREWS (11), 1 - D SCREWS (5), 1 - F SCREWS (3), 1 WASHER (3), 2 - B SCREWS (6,13)
G-CODE RH	SAFARILAND UBL	2 - POSTS (3,13), 1 - C SCREWS (11), 1 - D SCREWS (4), 1 - E SCREWS (6), 1 WASHER (6), 2 - A SCREWS (3,13)
G-CODE LH	SAFARILAND UBL	2 - POSTS (6,13), 1 - C SCREWS (11), 1 - D SCREWS (5), 1 - E SCREWS (3), 1 WASHER (3), 2 - A SCREWS (6,13)
G-CODE RH	DARA	3 - POSTS (1,2,9), 1 - C SCREWS (11), 2 - D SCREWS (4,6), 3 - G SCREWS (1,2,9)
G-CODE LH	DARA	3 - POSTS (1,2,9), 1 - C SCREWS (11), 2 - D SCREWS (3,5), 3 - G SCREWS ((1,2,9)
G-CODE RH	ALIEN GEAR	2 - POSTS (3,12), 3 - C SCREWS (3,11,12), 1 - D SCREWS (4), 1 - F SCREWS (6), 3 SPACERS (3,6,12), WASHER (6)
G-CODE LH	ALIEN GEAR	2 - POSTS (6,12), 3 - C SCREWS (6,11,12), 1 - D SCREWS (5), 1 - F SCREWS (3), 3 SPACERS (3,6,12), WASHER (3)
G-CODE RH	BLADE TECH	3 - POSTS (7,8,12), 1 - C SCREWS (11), 2 - D SCREWS (4,6), 3 - A SCREWS (7,8,12)
G-CODE LH	BLADE TECH	3 - POSTS (7,8,12), 1 - C SCREWS (11), 2 - D SCREWS (3,5), 3 - A SCREWS (7,8,12)
G-CODE RH	COMP-TAC	2 - POSTS (9,13), 3 - D SCREWS (4,6,11), 1 - B SCREWS (13), 1 - A SCREWS (9)
G-CODE LH	COMP-TAC	2 - POSTS (9,13), 3 - D SCREWS (3,5,11), 1 - B SCREWS (13), 1 - A SCREWS (9)
G-CODE RH	RAM MOUNT	1 - POST (12), 2 - D SCREWS (6,11), 1 - F SCREWS (4), 1 WASHER (4), 1 - B SCREWS (12)
G-CODE LH	RAM MOUNT	1 - POST (12), 2 - D SCREWS (3,11), 1 - F SCREWS (5), 1 WASHER (5), 1 - B SCREWS (12)
BLADE TECH	SAFARILAND QLS	3 - POSTS (3,6,13), 3 - A SCREWS (7,8,10), 3 - B SCREWS (3,6,13)
BLADE TECH	SAFARILAND UBL	3 - POSTS (3,6,13), 6 - A SCREWS (3,6,7,8,10,13)
BLADE TECH	DARA	3 - POSTS (1,2,9), 3 - A SCREWS (7,8,10), 3 - G SCREWS (1,2,9)
BLADE TECH	ALIEN GEAR	3 - POSTS (3,6,12), 3 - A SCREWS (7,8,10), 3 - C SCREWS (3,6,12), 3 SPACERS (3,6,12)
BLADE TECH	COMP-TAC	3 - POSTS (9,11,13), 5 - A SCREWS (7,8,9,10,11), 1 - B SCREWS (13)
BLADE TECH	G-CODE (GCA35)	1 - POST (12), 1 - A SCREWS (10), 1 - G SCREWS (12), 2 - H SCREWS (7,8)
BLADE TECH	G-CODE RH (GCA33)	3 - POSTS (4,6,11), 3 - A SCREWS (7,8,10), 3 - G SCREWS (4,6,11)
BLADE TECH	G-CODE LH (GCA34)	3 - POSTS (3,5,11), 3 - A SCREWS (7,8,10), 3 - G SCREWS (3,5,11)

BLADE TECH	RAM MOUNT	2 - POSTS (4 OR 5,12) 3 - A SCREWS (7,8,10), 2 - B SCREWS (4 OR 5,12)
COMP-TAC	SAFARILAND QLS	3 - POSTS (3,6,13), 3 - A SCREWS (7,8,10), 3 - B SCREWS (3,6,13)
COMP-TAC	SAFARILAND UBL	3 - POSTS (3,6,13), 6 - A SCREWS (3,6,7,8,10,13)
COMP-TAC	DARA	3 - POSTS (1,2,9), 3 - A SCREWS (7,8,10), 3 - G SCREWS (1,2,9)
COMP-TAC	ALIEN GEAR	3 - POSTS (3,6,12), 3 - A SCREWS (7,8,10), 3 - C SCREWS (3,6,12), 3 SPACERS (3,6,12)
COMP-TAC	BLADE TECH	1 - POST (12), 2 - A SCREWS (10,12), 2 - C SCREWS (7,8)
COMP-TAC	G-CODE (GCA35)	1 - POST (12), 1 - A SCREWS (10), 1 - G SCREWS (12), 2 - H SCREWS (7,8)
COMP-TAC	G-CODE RH (GCA33)	3 - POSTS (4,6,11), 3 - A SCREWS (7,8,10), 3 - G SCREWS (4,6,11)
COMP-TAC	G-CODE LH (GCA34)	3 - POSTS (3,5,11), 3 - A SCREWS (7,8,10), 3 - G SCREWS (3,5,11)
COMP-TAC	RAM MOUNT	2 - POSTS (4 OR 5,12) 3 - A SCREWS (7,8,10), 2 - B SCREWS (4 OR 5,12)
*ALIEN GEAR*	SAFARILAND QLS	1 - POST (13), 1 - B SCREW (13), 1 - L SCREW (12), 2 - N SCREWS (3,6)
*ALIEN GEAR*	SAFARILAND UBL	1 - POST (13), 1 - B SCREWS (13), 1 - L SCREW (12), 2 - M SCREWS (3,6)
*ALIEN GEAR*	DARA	3 - POSTS (1,2,9), 3 - L SCREWS (3,6,12), 3 - G SCREWS (1,2,9)
*ALIEN GEAR*	BLADE TECH	2 - POSTS (7,8), 2 - A SCREWS (7,8), 2 - L SCREWS (3,6), 1 - M SCREW (12)
*ALIEN GEAR*	COMP-TAC	3 - POSTS (9,11,13), 2 - A SCREWS (9,11), 1 - B SCREWS (13), 3 - L SCREWS (3,6,12)
*ALIEN GEAR*	G-CODE (GCA41)	
*ALIEN GEAR*	RAM MOUNT	1 - POST (4 OR 5), 1 - A SCREWS (4 OR 5), 2 - L SCREWS (3,6), 1 - M SCREW (12)
*BLACKHAWK*	DARA	3 - POSTS (1,2,9), 3 - G SCREWS (1,2,9), 3 - J SCREWS (7,8,12)
*BLACKHAWK*	SAFARILAND QLS	3 - POSTS (3,6,13), 3 - J SCREWS (7,8,12), 3 - B SCREWS (3,6,13)
*BLACKHAWK*	SAFARILAND UBL	3 - POSTS (3,6,13), 3 - J SCREWS (7,8,12), 3 - A SCREWS (3,6,13)
*BLACKHAWK*	G-CODE RH (GCA33)	3 - POSTS (4,6,11), 3 - J SCREWS (7,8,12), 3 - G SCREWS (4,6,11)
*BLACKHAWK*	G-CODE LH (GCA34)	3 - POSTS (3,5,11), 3 - J SCREWS (7,8,12), 3 - G SCREWS (3,5,11)
*BLACKHAWK*	ALIEN GEAR	2 - POSTS (3,6), 2 - J SCREWS (7,8), 2 - C SCREWS (3,6), 3 SPACERS (3,6,12), 1 - L SCREW (12)
*BLACKHAWK*	COMP-TAC	3 - POSTS (9,11,13), 2 - A SCREWS (9,11), 1 - B SCREWS (13), 3 - J SCREWS (7,8,12)
*BLACKHAWK*	RAM MOUNT	1 - POST (4 OR 5), 1 - B SCREW (4 OR 5), 2 - J SCREWS (7,8), 1 - K SCREW (12)

\* = USES HARDWARE FROM ALIEN GEAR // BLACKHAWK HARDWARE KIT